

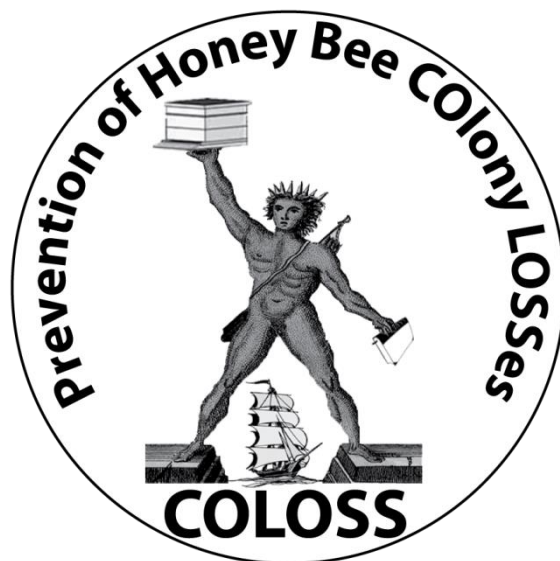


Teabepäeva korraldamist toetab Euroopa Liit Eesti mesindusprogrammi 2020-2022 raames

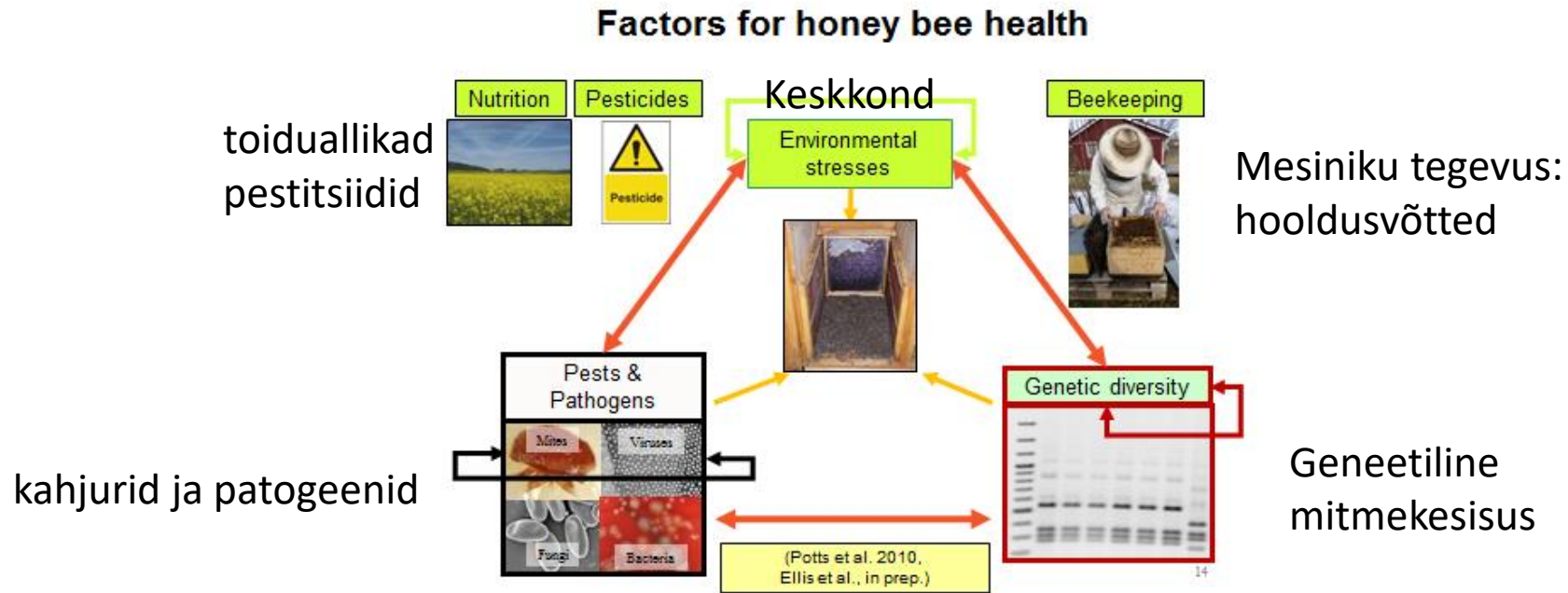
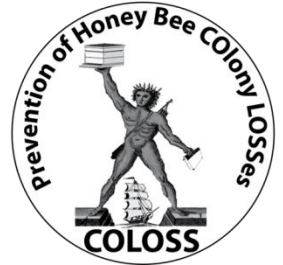
COLOSSi põhiprojekt „mesilaspereade kadude seire“

Aivar Raudmets

Teabeslaudid 2021
Robert Brodschneider



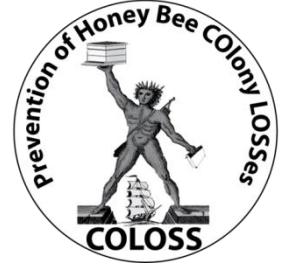
COLOSS-i peamised prioriteedid



Parandada mesilaste tervist rahvusvaheliselt:

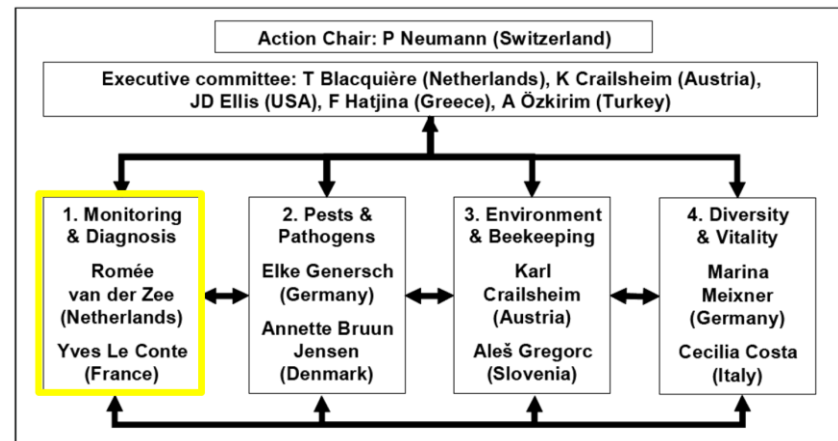
- mesilaste seire ja uuringute koordineerimine, sealhulgas standardsete meetodite väljatöötamine
- meemesilaste heaolu parandamisega seotud teadmiste levitamine ja koolituste pakkumine

COLOSSi põhiprojekt „mesilasperede kadude seire“



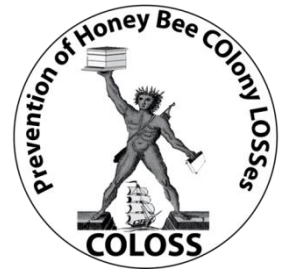
- Enne COLOSSi:
- Väga vähe andmeid mesilasperede kadude kohta
- Puudus standardiseeritud küsimustik / analüüs / andmebaas

COLOSS-i struktuur COST-i ajal (2008–2012):



- Alates 2014. aastast koordineerivad Robert Brodschneider (Graz, Austria) ja Alison Grey (Glasgow, Šotimaa)

COLOSSi põhiprojekt „mesilasperede kadude seire“

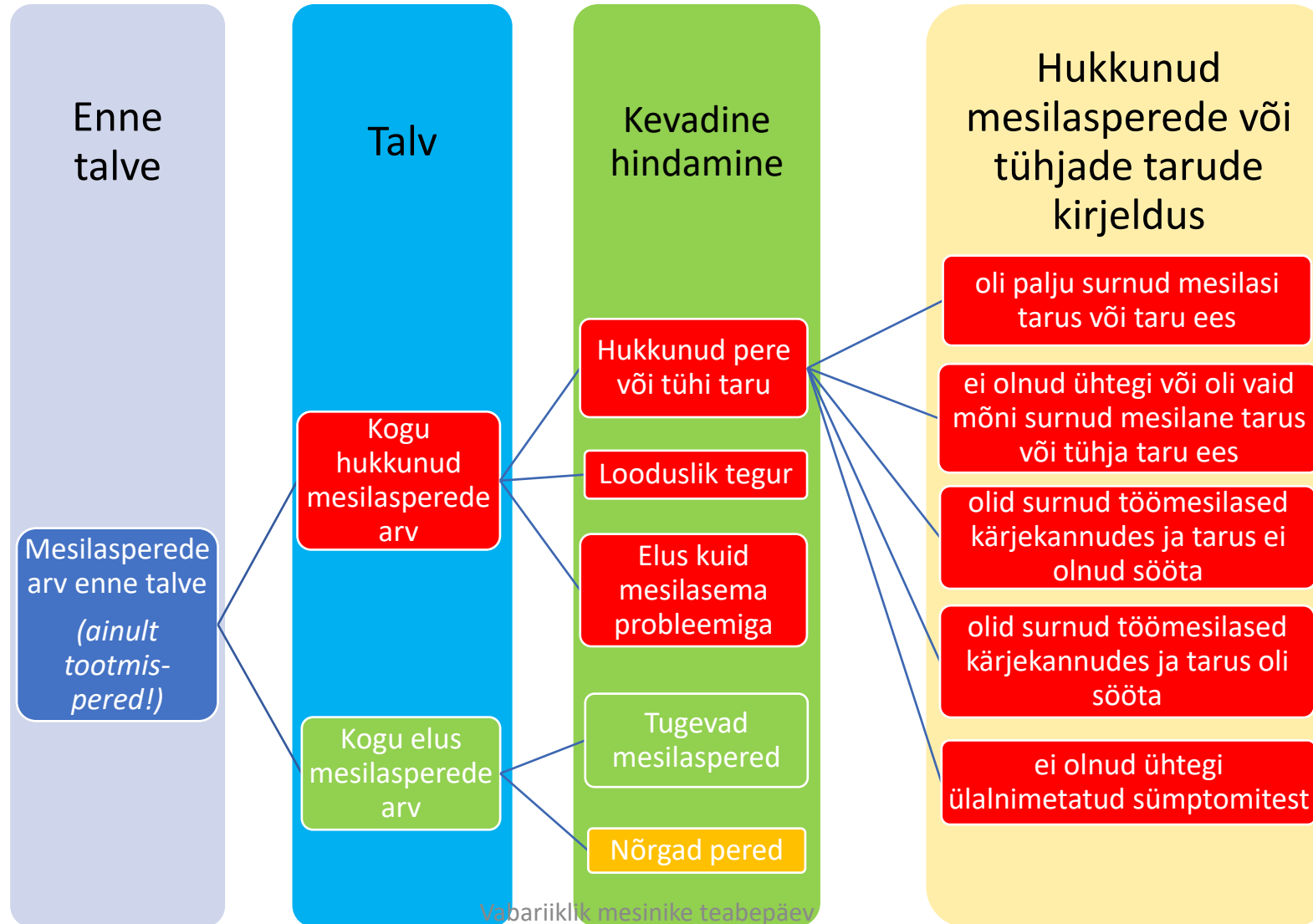


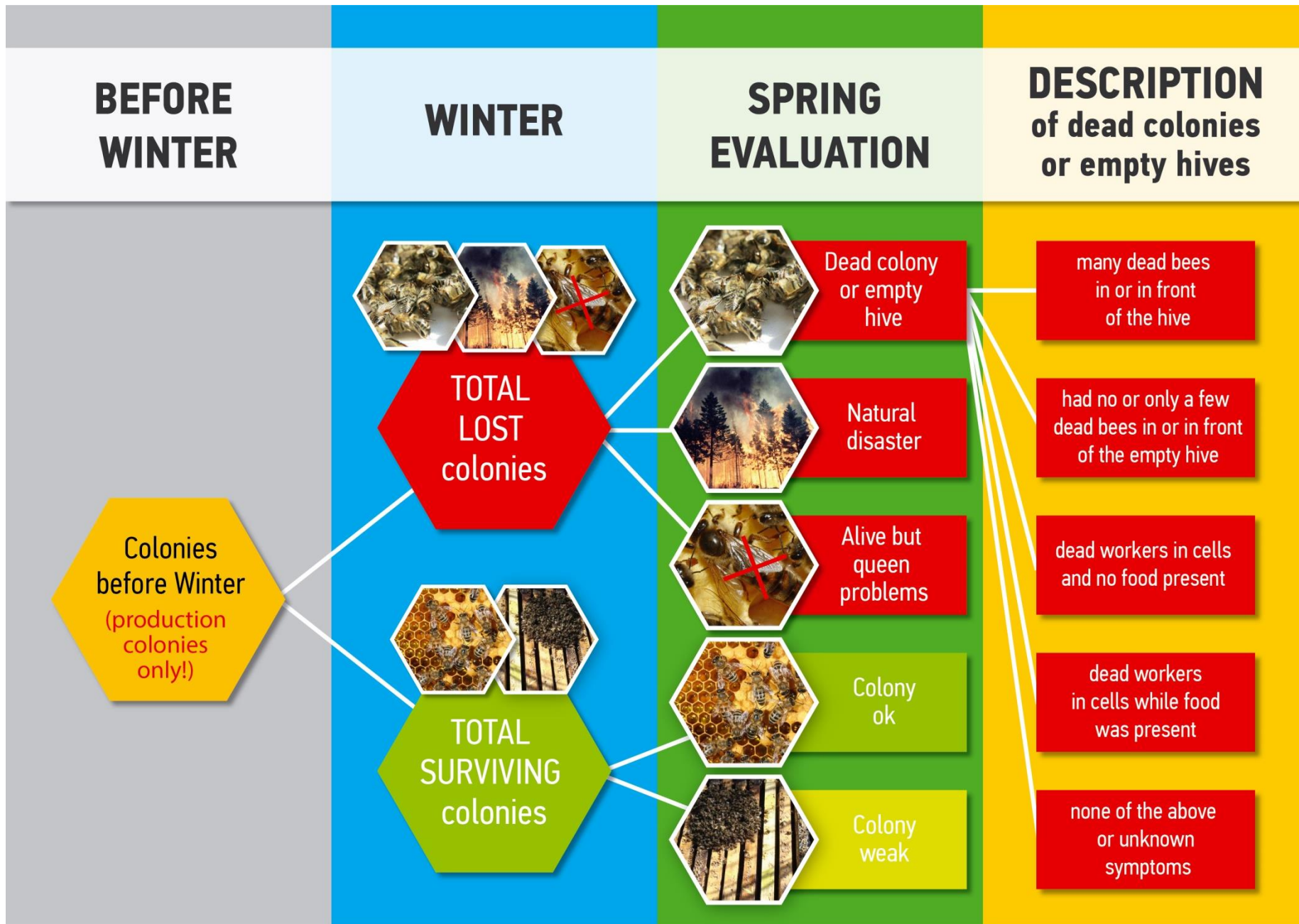
National coordinators (past and present)

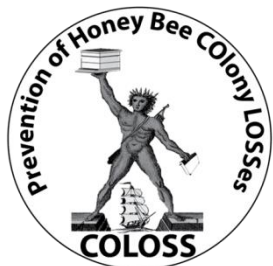
Noureddine Adjlane, Sreten Andonov, Alexis Ballis, Robert Brodschneider, Maria Bouga, Valters Brusbardis, Panuwan Chantawannakul, Jean-Daniel Charrière, Róbert Chlebo, Mary F Coffey, Karl Crailsheim, Tamas Csaki, Cristina Amaro da Costa, Bjørn Dahle, Jiří Danihlík, Ellen Danneels, Dirk C de Graaf, Marica Maja Dražić, Garth Evans, Mariia Fedoriak, Janja Filipi, Mohammed Forsi, Ivan Forsythe, Anna Gajda, Miroljub Golubovski, Alison Gray, Aleš Gregorc, Urszula Grzęda, Fani Hatjina, Amots Hetzroni, Mariano Higes, Céline Holzmann, Ian Hubbuck, Yasser Ibrahim, Evgeniya Ivanova, Raşan İvgin Tunca, Jes Johannesen, Benjamin Jones, Lassi Kauko, Aykut Kence, Meral Kence, Ole Kilpinen, Bach Kim Nguyen, Hrisula Kiprijanovska, Jasna Kralj, Justinas Kretavicius, Preben Kristiansen, Maritta Martikkala, Raquel Martín-Hernández, Carlos Aurelio Medina-Flores, Archie Murchie, Franco Mutinelli, Alexey Nikolenko, Christoph Otten, Aslı Ozkirim, Nick Panagidis, Laetitia Papoutsis, Solenn Patalano, Stephen Pernal, Magnus Peterson, Plamen Petrov, Lennard Pisa, Gavin Ramsay, Aivar Raudmets, Vladimir A Ryzhikov, Violeta Santrac, Ari Seppälä, Noa Simon-Delso, Victoria Soroker, Jevrosima Stevanovic, Grażyna Topolska, Aleksandar Uzunov, Maria Jose Valerio, Julien Vallon, Romée van der Zee, Flemming Vejsnæs, Vaia Vouk, Shi Wei, Selwyn Wilkins, Saskia Wöhl, Marion Zammit-Mangion

Vabariiklik mesinike teabepäev

COLOSS mesilasperede seire



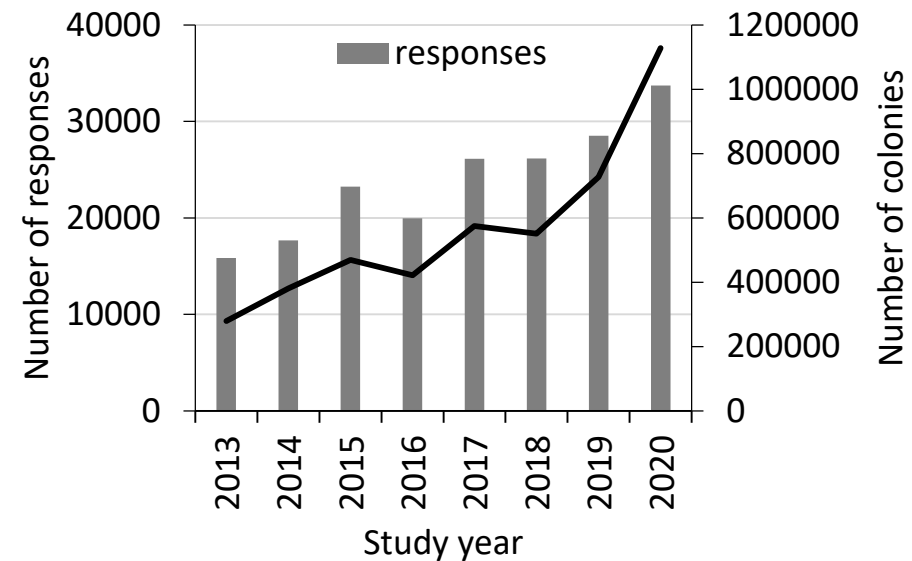
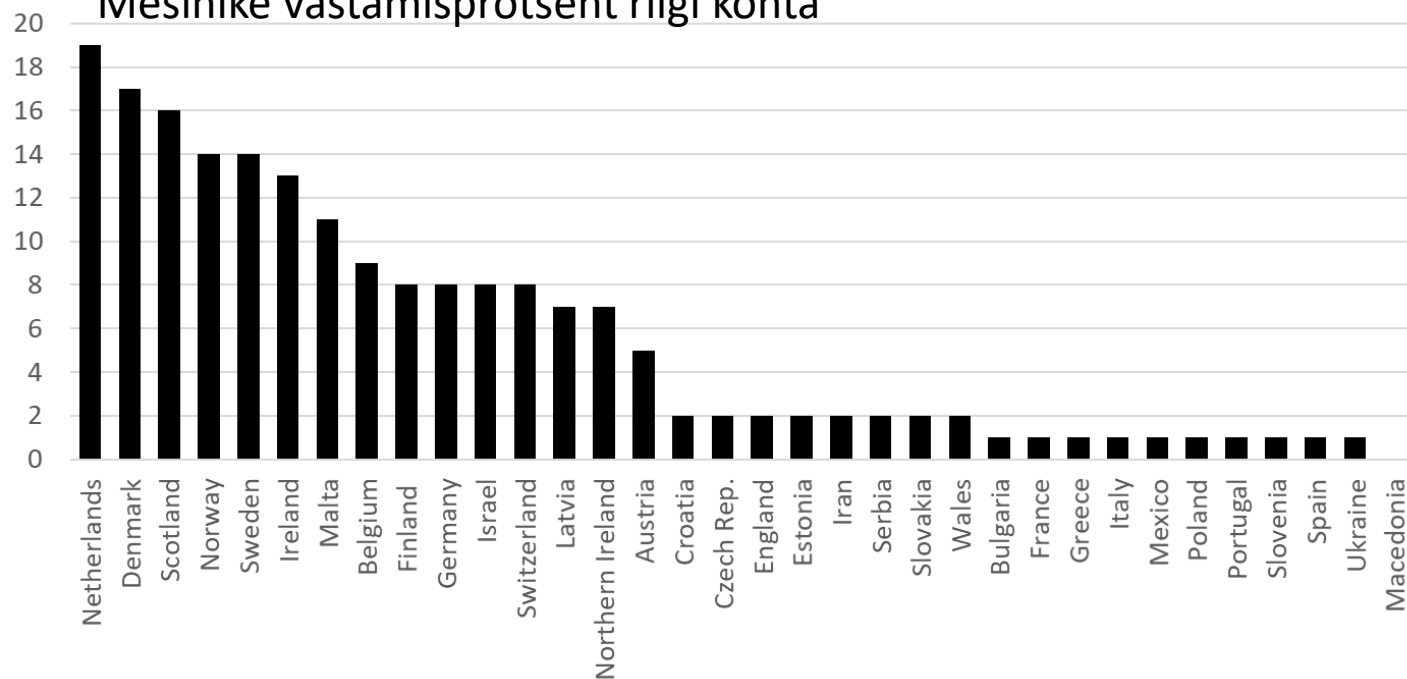




Vastuste määr

- Response rate (% of beekeepers in country)

Mesinike vastamisprotsent riigi kohta



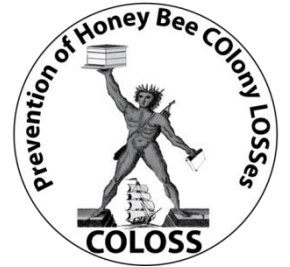
Seire grupi artiklid



First author	Publication Year	What
van der Zee et al.	2012	Two-year analysis
van der Zee et al.	2013	Standard methods (Bee Book)
van der Zee et al.	2014	GLMM of risk factors
Brodschneider et al.	2016	Effect of operation size
Brodschneider et al.	2018	Effect of migratory beekeeping
Gray et al.	2019	Effect of forage sources
Gray et al.	2020	Effect of young queen

Kõik artiklid on avaldatud ajakirjas Journal of Apicultural Research!



























Seire grupi artiklid



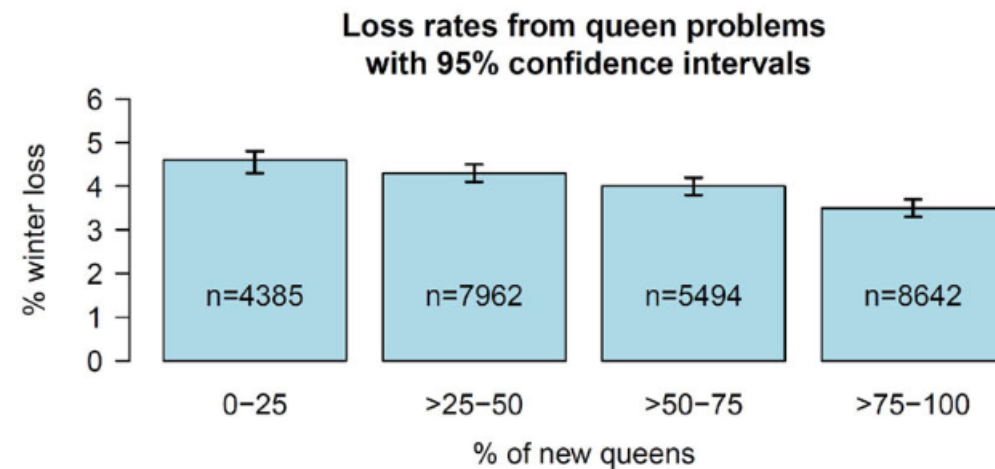
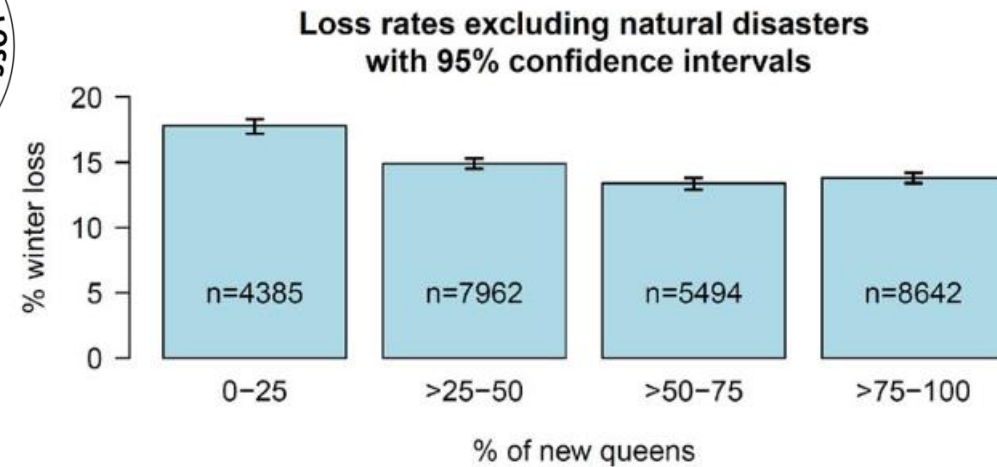
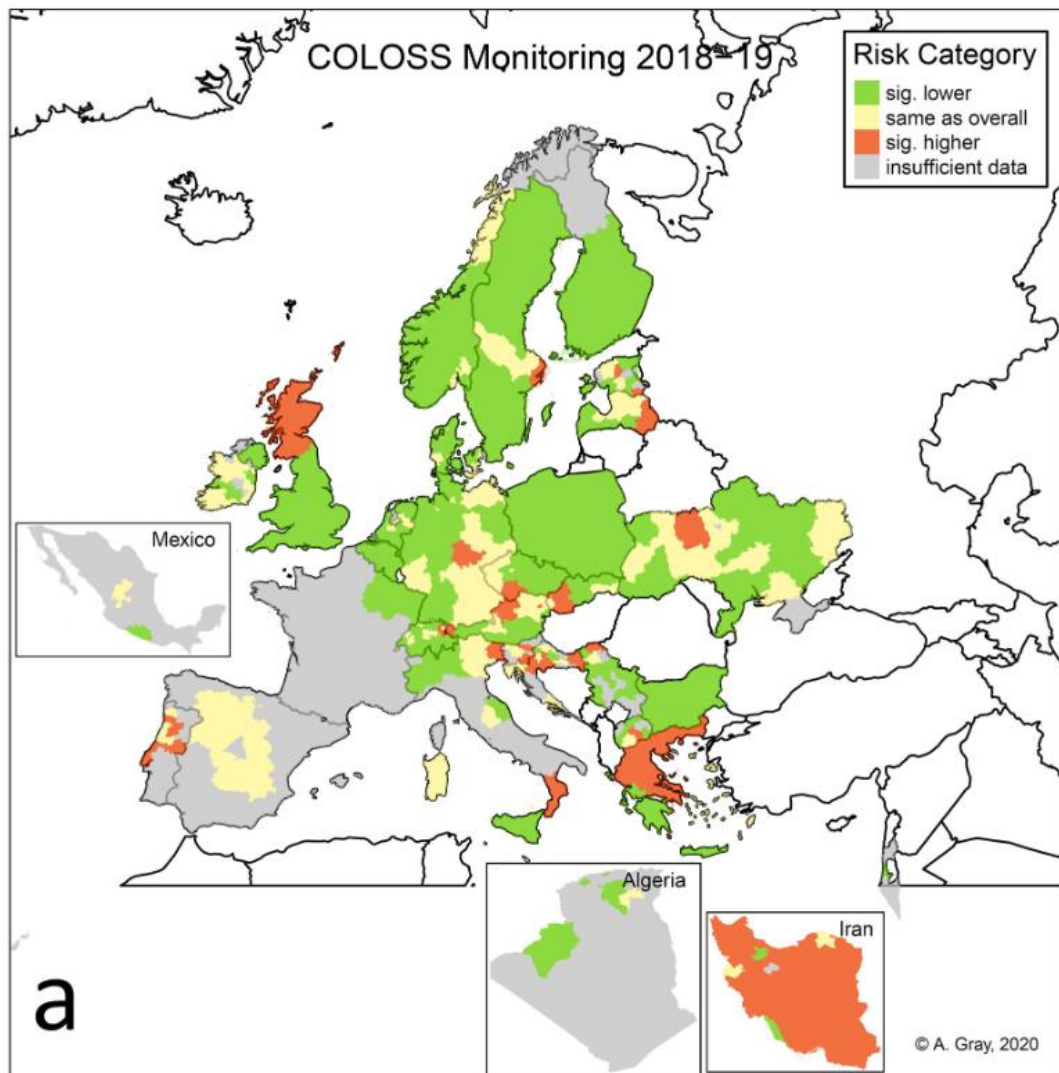
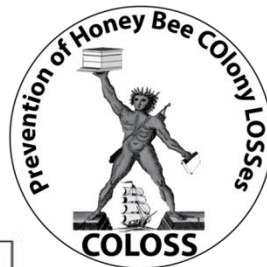
 OPEN ACCESS

NOTES AND COMMENTS

Honey bee colony winter loss rates for 35 countries participating in the COLOSS survey for winter 2018–2019, and the effects of a new queen on the risk of colony winter loss

Alison Gray^{a**} , Nouredine Adjlane^b , Alireza Arab^c , Alexis Ballis^d, Valters Brusbardis^e, Jean-Daniel Charrière^f , Robert Chlebo^g , Mary F. Coffey^h, Bram Cornelissenⁱ , Cristina Amaro da Costa^j , Bjørn Dahle^k, Jiří Danihčík^l , Marica Maja Dražić^m , Garth Evansⁿ, Mariia Fedoriak^o , Ivan Forsythe^p , Anna Gajda^q , Dirk C. de Graaf^r , Aleš Gregorc^s, Iliyana Ilieva^t, Jes Johannesen^u , Lassi Kauko^v , Preben Kristiansen^w , Maritta Martikkala^x , Raquel Martín-Hernández^y , Carlos Aurelio Medina-Flores^z , Franco Mutinelli^{aa} , Solenn Patalano^{bb} , Aivar Raudmets^{cc}, Gilles San Martin^{dd} , Victoria Soroker^{ee}, Jevrosima Stevanovic^{ff} , Aleksandar Uzunov^{gg}, Flemming Vejsnaes^{hh}, Anthony Williamsⁱⁱ , Marion Zammit-Mangion^{jj}  and Robert Brodschneider^{kk*} 

Seire grupi artiklid



Colonies with young queens survive better! Gray et al., 2020 - Noorte mesilasemadega pered saavad paremini hakkama!

Teabelevi seire kohta.

Centre de recherche apicole

Pertes hivernales de colonies durant l'hiver 2018-2019 dans 35 pays participant à l'enquête COLOSS, et effets du pourcentage de jeunes reines sur le risque de pertes hivernales

Jean-Daniel Charrière, Centre de Recherche Apicole, Agroscope, 3003 Berne

La Suisse organise depuis plusieurs années une enquête annuelle sur les pertes hivernales de colonies. Les questions posées proviennent en grande partie du questionnaire standardisé mis en place par le groupe international COLOSS dans le but de regrouper les données et faire des comparaisons internationales. Dans un article récemment publié dans la revue « Journal of Apicultural Research », les taux de pertes de colonies d'abeilles mellifères au cours de l'hiver 2018/19 dans 35 pays (31 en Europe) sont comparés. Nous vous présentons ici un résumé de ces résultats.



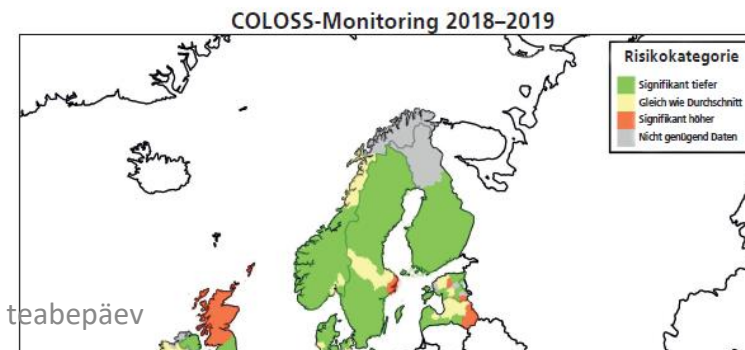
 FORSCHUNG

COLOSS-Auswertung der Winterverluste 2018/19 in 31 europäischen Ländern

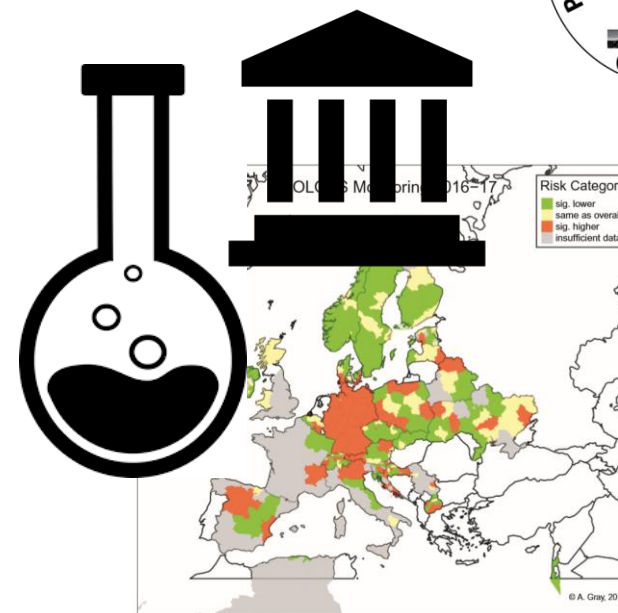
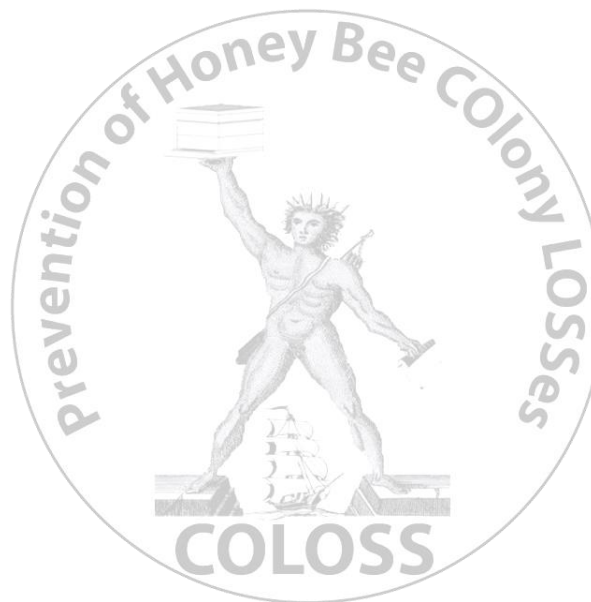
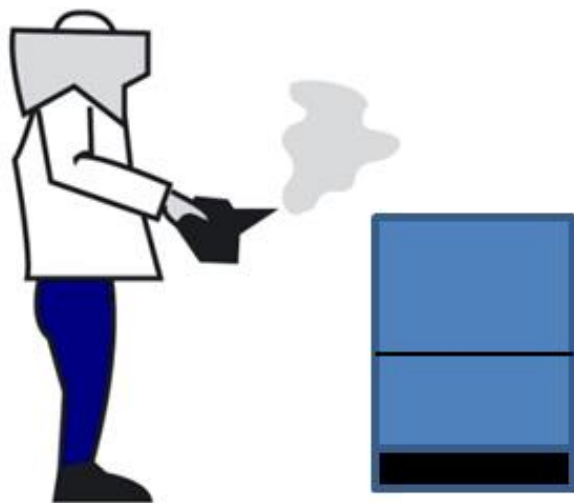
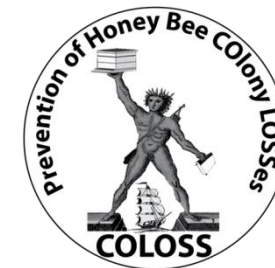
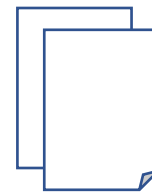
Seit mehreren Jahren organisiert Bienenschweiz jährlich eine Erhebung über die Winterverluste von Bienenvölkern. Die Fragen basieren weitgehend auf dem standardisierten Fragebogen der internationalen COLOSS-Gruppe, der entwickelt wurde, um Daten zu sammeln und internationale Vergleiche anstellen zu können. In einem kürzlich im « Journal of Apicultural Research » veröffentlichten Artikel werden die Völkerverlusten der Honigbienen des Winters 2018/19 aus 35 Ländern, davon 31 europäische Länder, welche an der COLOSS-Umfrage teilnahmen, verglichen. Auch der positive Effekt von jungen Königinnen auf das Risiko von Winterverlusten wurde untersucht. Die Ergebnisse werden hier zusammengefasst.

JEAN-DANIEL CHARRIÈRE, ZENTRUM FÜR BIENENFORSCHUNG, AGROSCOPE, 3003 BERN

FORSCHUNG 



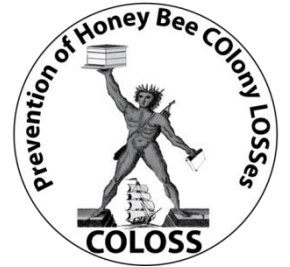
Monitoorimine



Tagasiside / kasum



Osalenud riigid (2020)



- Regulaarselt: **Algeria**, Austria, Belgium, Czech Republic, Croatia, Denmark, England, Estonia, Finland, France, Germany, Ireland, **Israel**, Italy, Latvia, (North) Macedonia, Malta, **Mexico**, Netherlands, N. Ireland, Norway, Poland, Portugal, Scotland, Serbia, Slovakia, Slovenia, Spain, Sweden, Switzerland, Ukraine, Wales
- Hiljuti liitunud: Bulgaria, Greece, **Iran**
- Teised: Belarus, Turkey, Hungary
- Sel aastal liitunud: Romania, **Egypt**, **New Zealand**

(European & **other** countries)

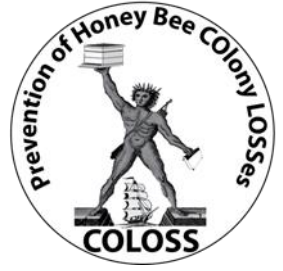
Info mesinikele!



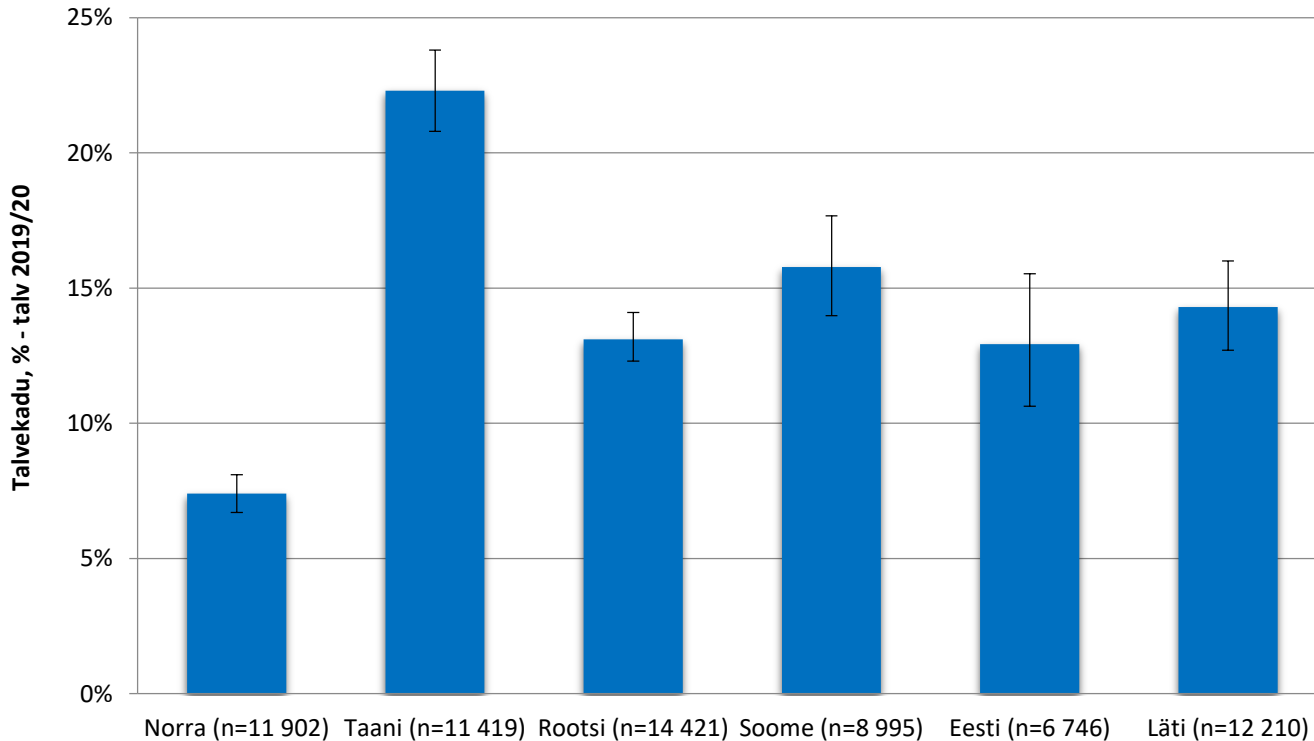
- Uuringut Eestis koordineerib Aivar Raudmets
- Oma mesilasperede talvitumise tulemused saate esitada ajavahemikul 1.mai 2021 kuni 1. juuni 2021 (võimalusel aprill – mai)
- Eesti seire tulemused avaldatakse mesinike jaoks
 - ajakirjas „Mesinik“,
 - veebilehtedel: mesindusprogramm.eu
 - ... muud võimalused?

Talvekaod Põhja- ja Baltimaades

Coloss 2020 andmebaasis on info ligikaudu 65 693 mesilaspere kohta



Mesilasperede talvekaod Põhja- ja Baltimaades 2019-2020



- Talv 2019–2020 oli Põhja- ja Baltimaade mesilasperedele aasta tagusega võrreldes pisut keerulisem, talvekaod jäid 7–22% vahele (näit. aasta varem 6–14%).

- Norras 7%
- Rootsis, Soomes, Eestis ja Lätis 13 - 15%
- Taanis 22%

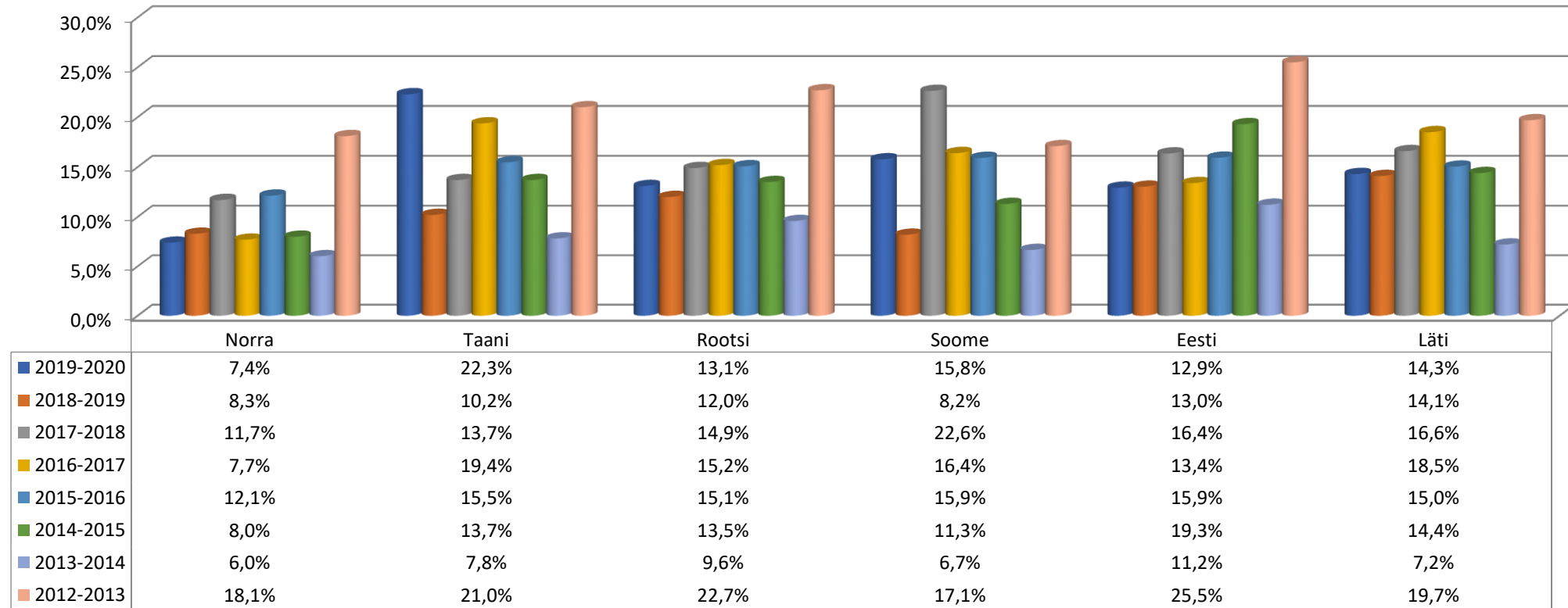
Põhja- Baltimaade koostöös kogusid andmeid Taanis: Flemming Vejsnæs ja Ole Kilpinen; Norras: Bjørn Dahle; Rootsis: Preben Kristiansen; Soomes (Ahvenamaa): Maritta Martikkala; Eestis: Aivar Raudmets; Lätis: Valters Brusbardis.

Talvekaod Põhja- ja Baltimaades

Coloss 2020 andmebaasis on info ligikaudu 65 693 mesilaspere kohta

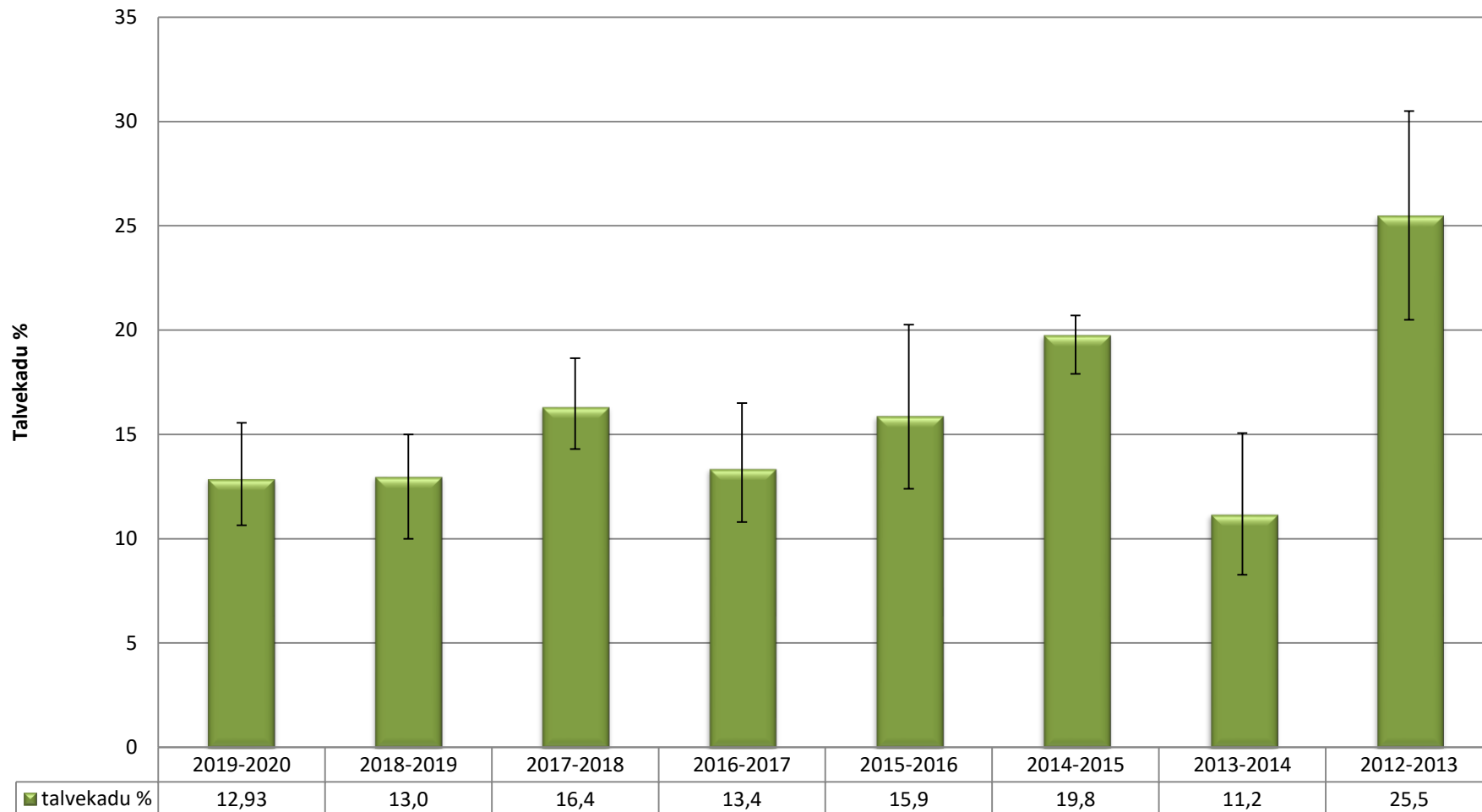
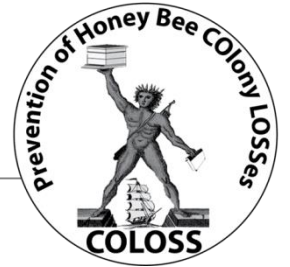


Põhja- ja Baltimaade mesilasperede talvekadude uuringute võrdlus 2012-2020

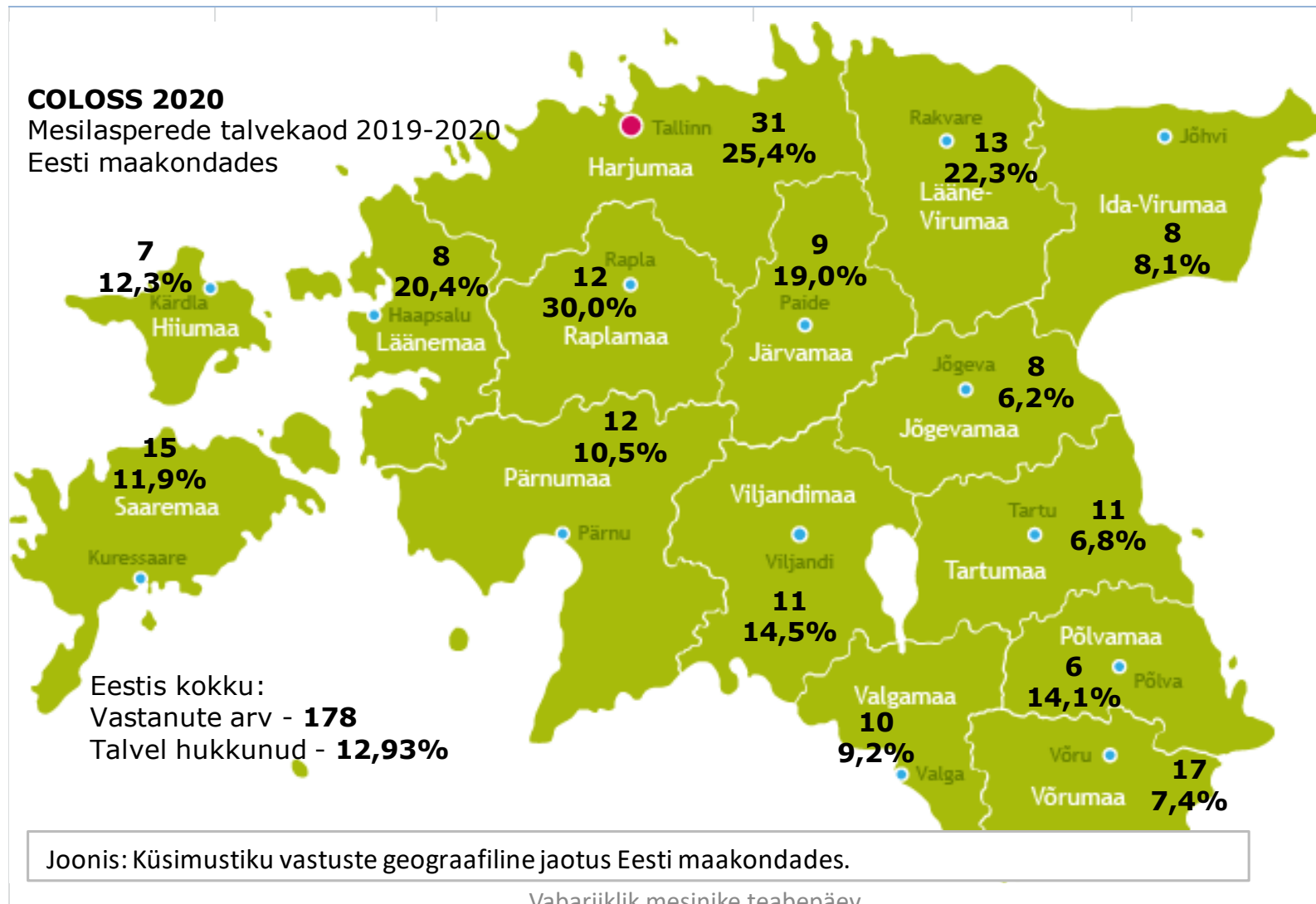
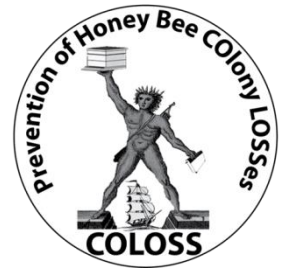


Põhja- Baltimaade koostöös kogusid andmeid Taanis: Flemming Vejsnæs ja Ole Kilpinen; Norras: Bjørn Dahle; Rootsis: Preben Kristiansen; Soomes (Ahvenamaa): Maritta Martikkala; Eestis: Aivar Raudmets; Lätis: Valters Brusbardis.

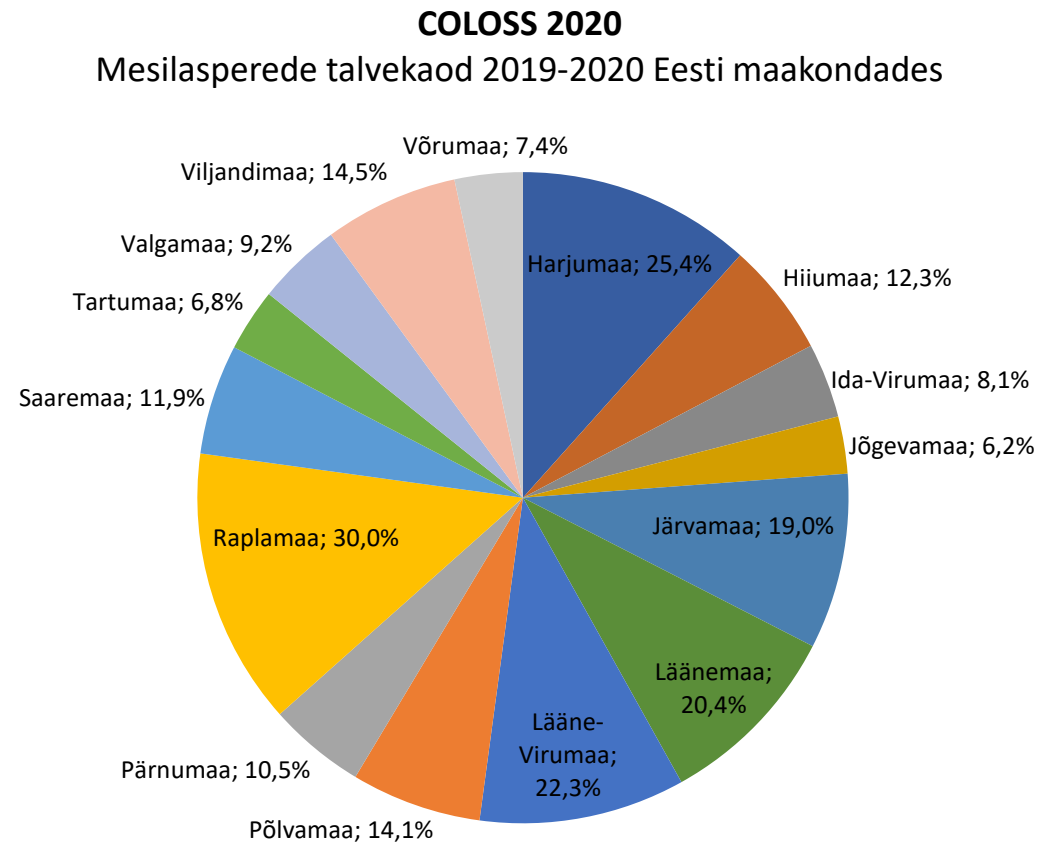
Mesilasperede talvekaod Eestis COLOSS küsimustiku andmete põhjal perioodil 2013 - 2020



Talvekaod 2019-2020 Eesti maakondades

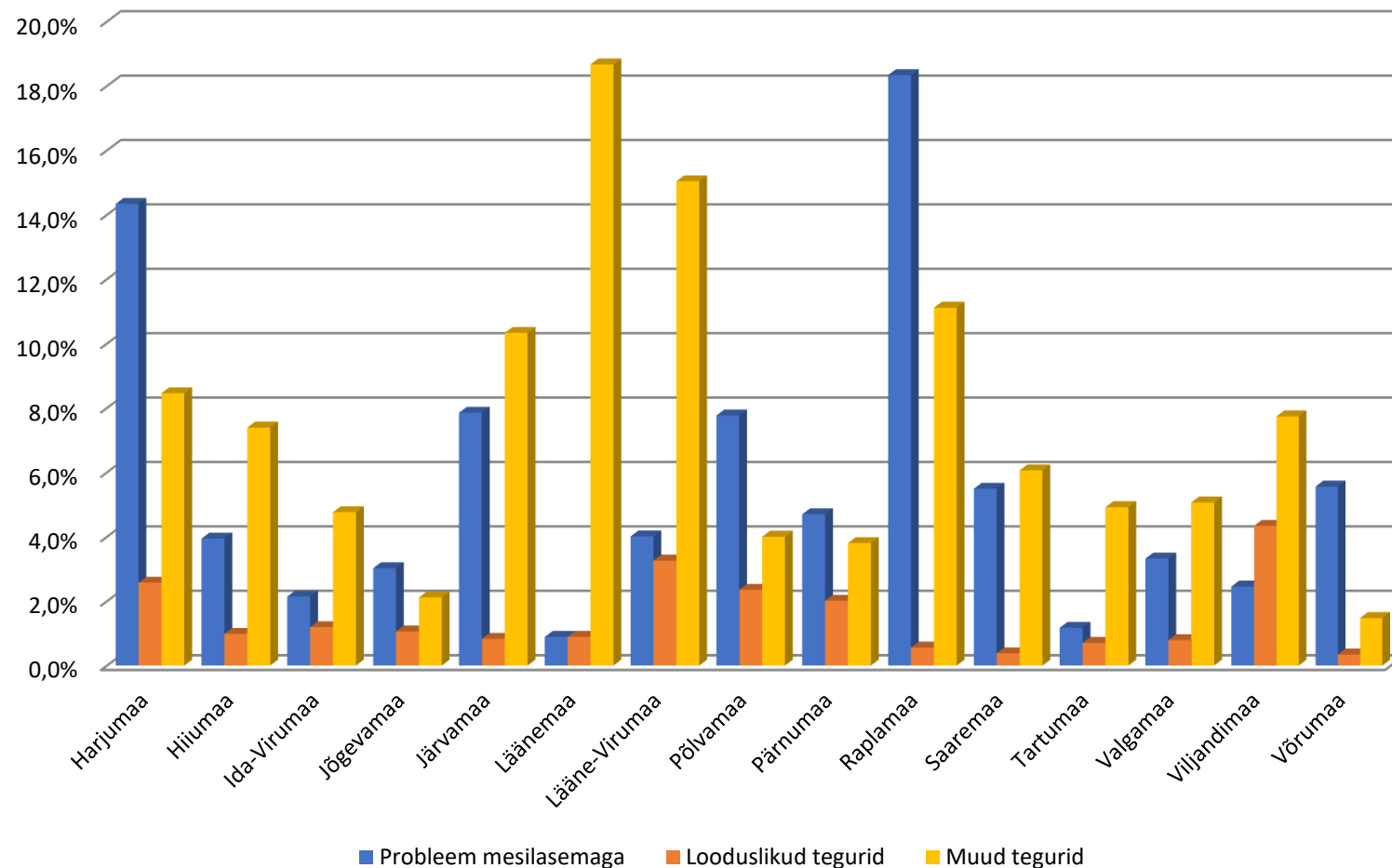


Talvekaod 2019-2020 Eesti maakondades



Talvekaod 2019-2020 Eesti maakondades

Maakond	Vastanuid	Mesilaspere -sid enne talve 2019- 2020	Talvekaod kokku %
Harjumaa	31	544	25,37%
Hiiumaa	7	203	12,32%
Ida-Virumaa	8	420	8,10%
Jõgevamaa	8	662	6,19%
Järvamaa	9	242	19,01%
Läänemaa	8	225	20,44%
Lääne-Virumaa	13	399	22,31%
Põlvamaa	6	425	14,12%
Pärnumaa	12	447	10,51%
Raplamaa	12	180	30,00%
Saaremaa	15	528	11,93%
Tartumaa	11	427	6,79%
Valgamaa	10	632	9,18%
Viljandimaa	11	530	14,53%
Võrumaa	17	882	7,37%
KOKKU	178	6746	12,93%



Info vajab levitamist!!! COLOSS 2020-2021



**Küsimustik on avatud
1. mai - 1. juuni 2021**

**Link avaldatakse juba
aprillis!**

**Usaldusmesinike
võrgustiku kaasabi**

**IGAÜHE KAASABI ON
TERETULNUD!**

TÄNÜD!

OOTAME MÄRKMEID SELLE TALVE KADUDEST

Hea mesinik, kutsume sind osalema mesilasperede talvekadude jätku-uuringus 2021.

Mesilasperede talvekadude küsimustik on loodud selleks, et saada tervikpilt mesilasperede kollapsi ehk mesilaste hukkumise sündroomi (*colony collapse disorder, CCD*, ingl k) põhjustest ning aidata parandada mesilaste tervist. Eelmisel aastal osales uuringus mesinikke 38 riigist.

Küsimustikku võib täita anonüümselt. Siiski on vajalik avaldada oma meiliaadress või telefoninumber, et saaksime vajadusel saadetud vastuseid täpsustada.

Küsimustikus on 29 küsimust, millele vastamine võtab aega u 30 minutit. Küsimustikku täitma asudes palun võta käeulatusse materjalid, kust vajadusel kontrollida andmeid möödunud hooaja mesilasperede,

mesilasemade vanuse ja päritolu ning varroa-tõrje kohta. Pane kindlasti kirja ka see, mis vallas ja millise asula lähedal sinu mesila paikneb – see aitab teadlastel ligikaudselt määrata mesila piirkonda.

Pane tähele, et tärniga tähistatud küsimused on kohustuslikud. Vastuste saatmiseks vajuta nupule „KINNITA“. Vajadusel saab nõu küsida oma piirkonna usaldusmesinikult või tel 5341 4067 (Aivar Raudmets).

Küsimustik on avatud ajavahemikul 1. mai kuni 1. juuni 2021. Küsimustiku lingi avaldame juba aprillis mitmel mesindusega seotud veebilehel ja sotsiaalmeedias.

Anna oma panus mesilaste tervise heaks – iga vastus aitab teadlastel välja selgitada mesilasperede hukkumise riskitegurid ja toetab seega ka sinu mesila heaolu.